

## COMPARISON BETWEEN ENVIROCLAD CLADDING AND OTHER WALL PANELS

ENVIROCLAD WALL CLADDING	OTHER WALL PANELS
Light weight	Heavy real stone and brick
No wet-work, no dust, no mess	Wet work, dust and mess
Thermal and acoustic insulation	Cold and noisy feel
Quick and easy installation	Takes time to complete alterations
Easy to cut and fit	Complex cutting and fitting
Requires only DIY skills	Professional artisans needed
Low cost installation	Expensive installation
Guaranteed quality finish	Quality of finish unknown
Alterations in a business environment done with little disruption	Alterations cannot be done in a working business environment
UV resistant	Depends on material used
Water resistant	Depends on material used
Non-toxic - can be enjoyed immediately after installation	
An industrial product with a high quality standard	

## TECHNICAL CHARACTERISTIC OF ENVIROCLAD CLADDING

	DIN number	Unit	ENVIROCLAD Cladding
Density	53215	Kg/cubic cm	300 - 340
Shore hardness	53505	ShD	40 - 050
Flex	53423	Kg/sq com	80 - 100
Thermal resistance	ISO 8990:1997		0.56
Fire standard	4102		B1
Water absorption (after 120 hours)	53472	%	1
Dimensional stability		% -30 Celsius	0.5
		% +80 Celsius	0.5

SENSORIAL		TECHNICAL	
Glossiness	Satin	UV resistance	Good
Structure	Closed	Water resistant	Good
Hardness	Hard	Weather resistant	Good
Acoustics	Good	Chemical resistant	Moderate
Insulation	Good	Weight	Light
Paintwork	Acrylic	Scratch resistant	Moderate
		Material	Polyurethane



Enquiries:

**James 082 491 7578**

**Daan 082 873 1303**

Email: [enviroclad@yahoo.com](mailto:enviroclad@yahoo.com)

Website: [www.enviroclad.co.za](http://www.enviroclad.co.za)





ENVIROCLAD boasts a decorative panel that combines our industrial strength polyurethane with an all weather coating. This cladding is a lightweight hard wearing panel that is an exact replica of brick, slate, wood or rock finishes. Not only is the ENVIROCLAD cladding 100% UV resistant and water-proof, it also acts as a thermal and acoustic insulator.

The polyurethane that is used in our wall cladding panels was originally developed for military use. This new formula now used in our panels provides a high density flexible inner core without losing the lightness to polyurethane. Polyurethane is commonly used as an insulator, but the usual formula creates a very low density material, making it extremely fragile even to touch and unsuitable for the quality cladding made by ENVIROCLAD.

ENVIROCLAD cladding is a fire retardant, does not melt or serve as a combustion base: it is a stable product that does not perish, resists acids, salt water and industrial gases.

Handling and working with the ENVIROCLAD cladding panels is easy. The product is light weight, solid, easy to cut and can be adapted to fit any space. The panels are cleverly designed to "key" together like a puzzle, making it easy to install. ENVIROCLAD manufactures both indoor and outdoor panels. They look particularly good when used to cover country cottage walls, patios, revitalize a lounge or living room. ENVIROCLAD cladding panels are absolute copies of any accent design, period or building theme.

ENVIROCLAD currently manufacture a range of 5 brick cladding varieties, 6 slate designs and colours, eight unique stone panels and eight 3D panels (ConturMuri Range).

The panels are made of Polyurethane with an acrylic surface giving the panel a very natural appearance.

The panels;

- are UV resistant,
- are water resistant,
- insulate acoustically and thermally,
- are fire retardant,
- hand painted,
- produce unique brick, slate and stone imitations,
- are easy to handle (weigh about 4kgs for the indoor panel and 7kgs for the outdoor panel). They measure approximately 1 sqm each.

This makes it easy to fix them on the wall and can be done by one person alone. The clever interlocking design ensures quick 'fool-proof' installation. Once joined an acrylic sealant is applied between the panels, a quick paint touch-up ensures there are no visible joints.

The ENVIROCLAD panels create such an authentic appearance that there is no detectable difference between a real stone wall and the ENVIROCLAD cladding



## Frequently Asked Questions?

**1) Are there colour or shading differences?**

Each panel is hand painted to offer a naturally occurring stone, brick or slate finish.

**2) Are the Panels UV resistant?**

The panels are coated with a acrylic sealant used in all outdoor house paints. They have UV resistant, fade-proof additive ensuring each panel is colour fast.

**3) Why do the panels look so authentic?**

The panels are manufactured using a unique moulding process manufactured by ENVIROCLAD . These panels are exact copies of the original wall they imitate.

**4) Are the panels fire-proof?**

The surface of the panel is manufactured with a special protective layer, which gives them a fire classification according to UNE EN 13501-1:2002 E. The panels are fire retardant.

**5) Are the panels water-proof and resistant to high humidity?**

Yes. The panels are 100% water resistant.

**6) Are the panels suitable for indoor and outdoor use?**

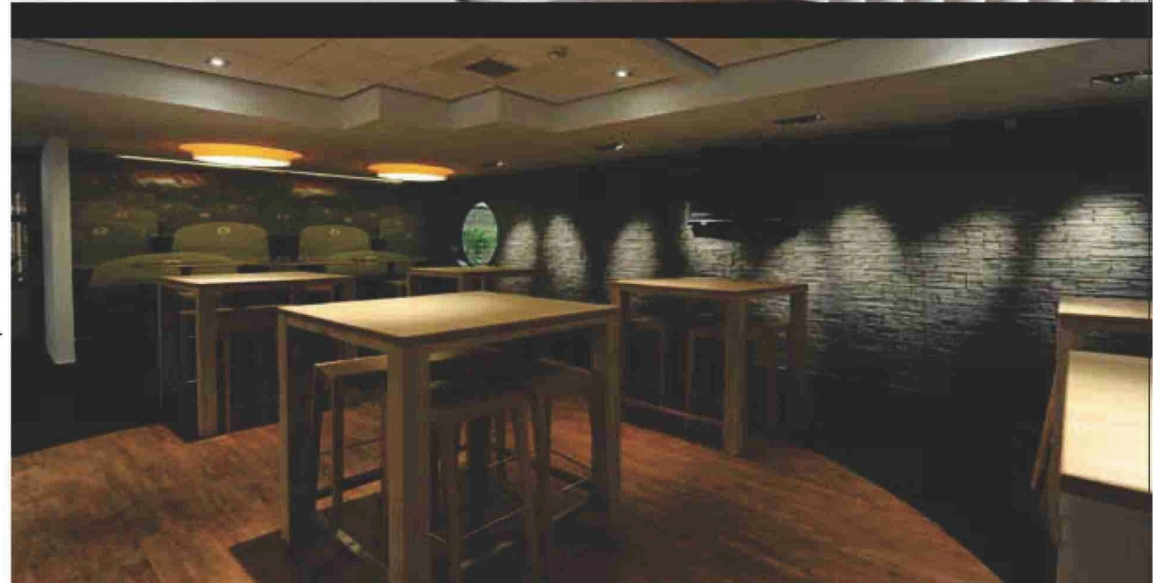
ENVIROCLAD manufactures 2 types of panels, one for indoor use and one for outdoor. Both are UV resistant as they are coated with a UV sealant.

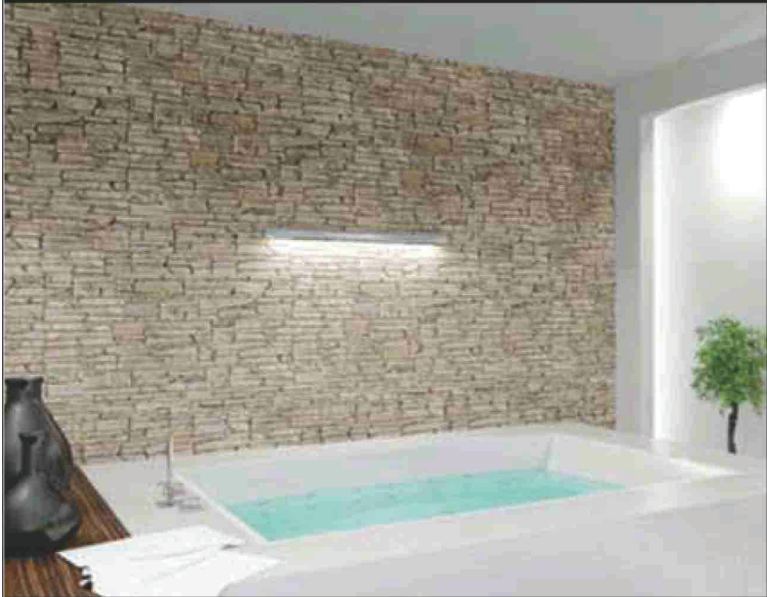
**7) Are the panels available in other colours as well?**

Yes, in general this is possible. Panels can be painted to order but this has a longer lead-time.

**8) How many panels can a person install in one day?**

We know that all walls are not equal. But, on a "perfect" wall (even, dry, not too soft or too hard), a person with experience will be able to install about 35 panels a day. A person without experience could probably manage 15-18 panels. This depends on the size of the wall and the number of cut-outs required.



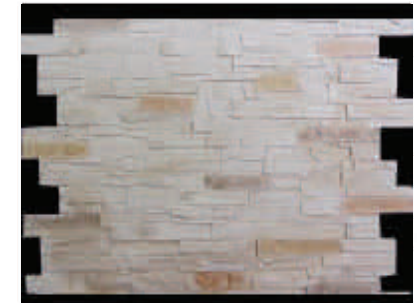


**Travertine Old Slate Light**



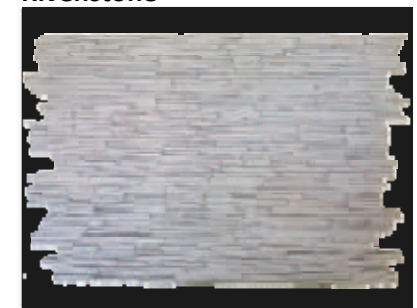
**Dimensions: 1110 x 780mm**

**Travertine New Slate**



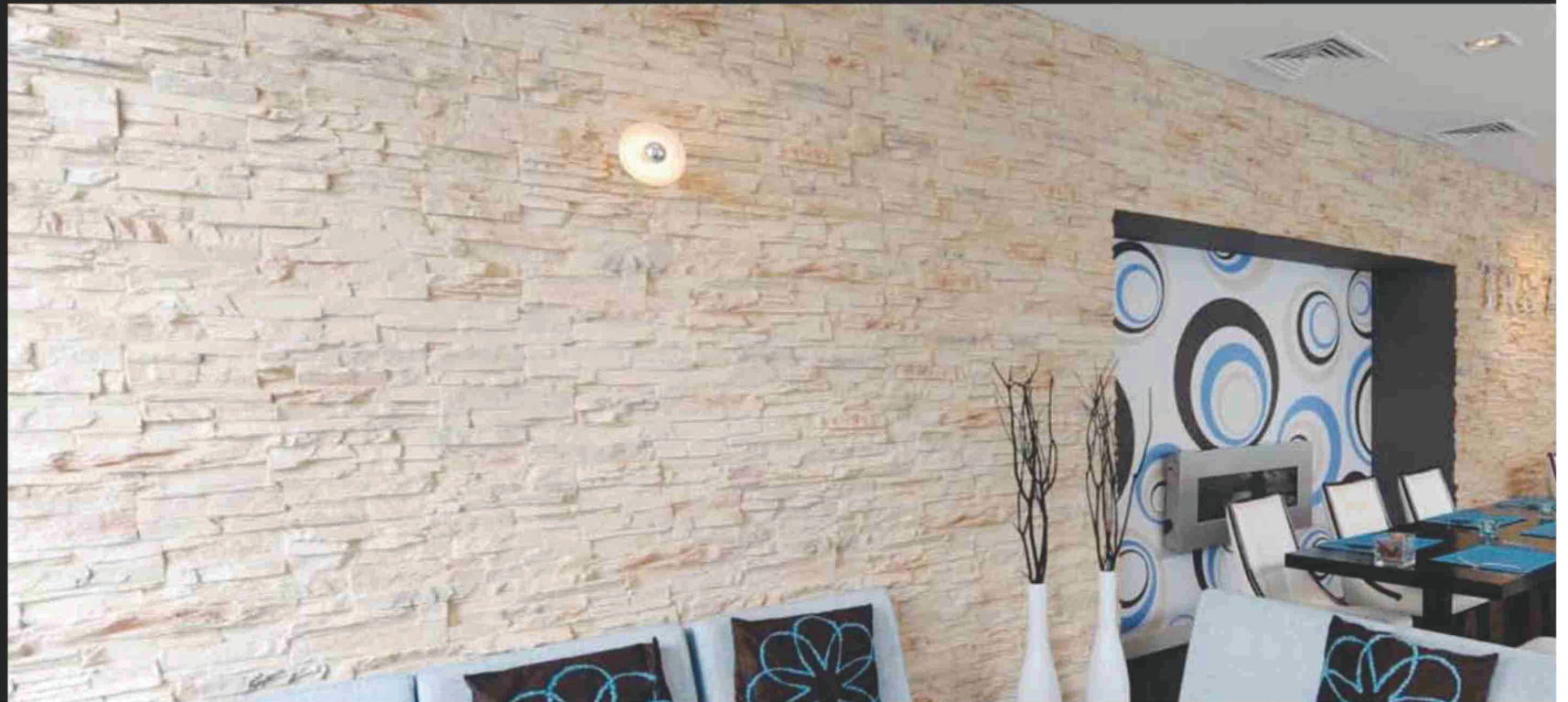
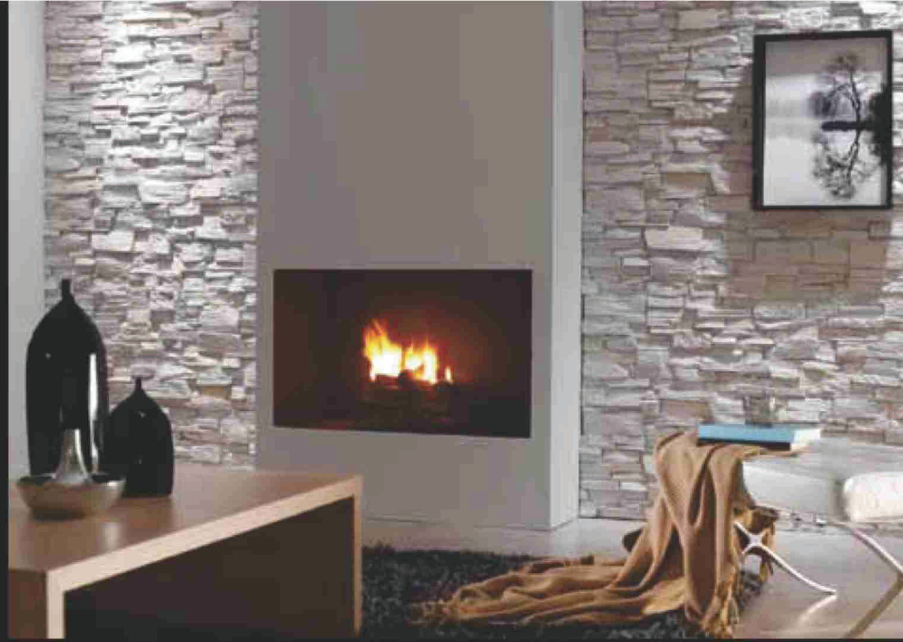
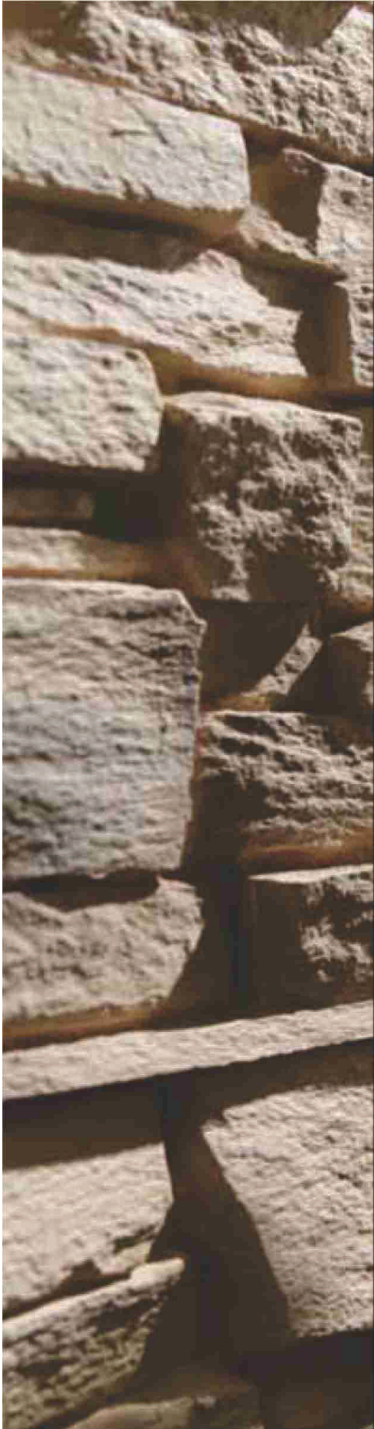
**Dimensions: 985 x 780mm**

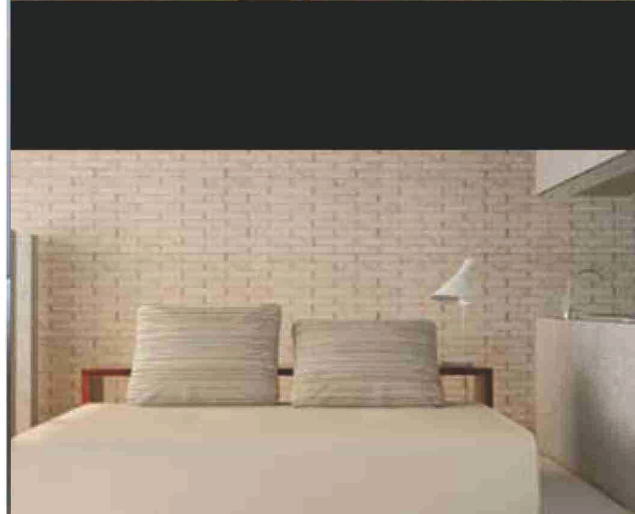
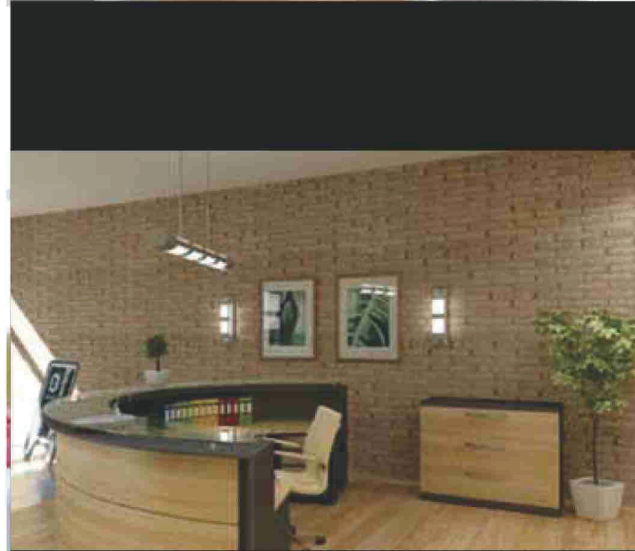
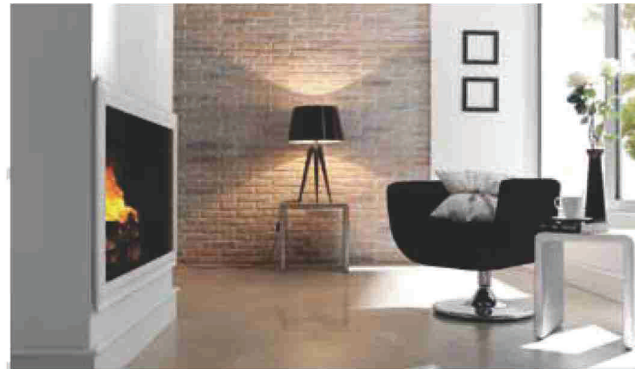
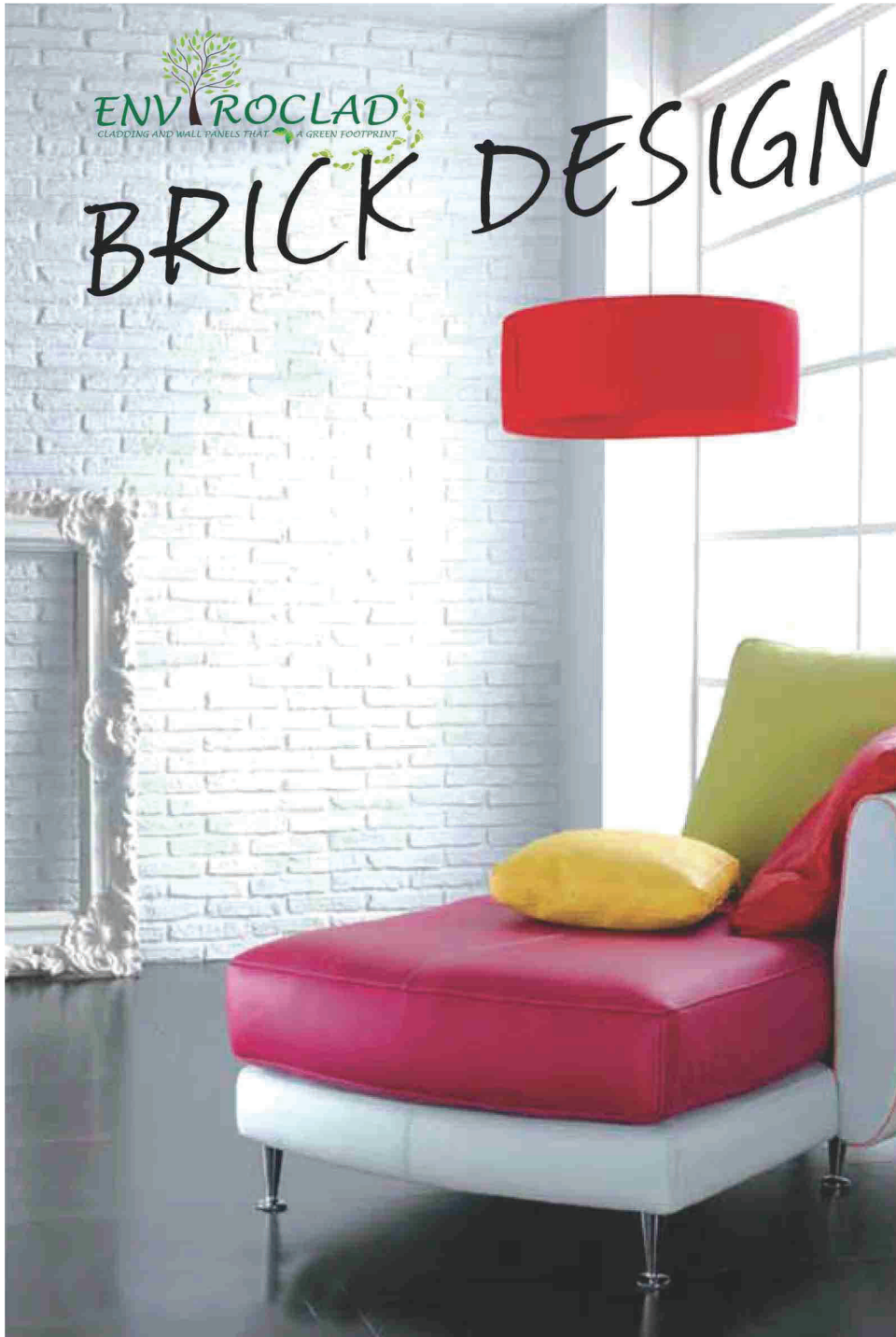
**Rivenstone**



**Dimensions: 1110x760mm**

**Weight: 4-7kgs/panel**





Kruger Old Brick Red



Kruger Old Brick White



Dimensions: 950 x 770mm  
Weight: 4-7kgs/panel



St Lucia Brick Brown



St Lucia Brick White



St Lucia Brick Red



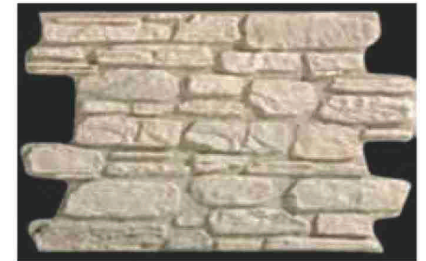
Dimensions: 1210 x 785  
Weight: 4-7kgs/panel



Rustica **COMING SOON**



Rustica Light **COMING SOON**



Dimensions 1260 x 800 mm  
Weight 4 – 7kgs / panel

Travertine Stone White

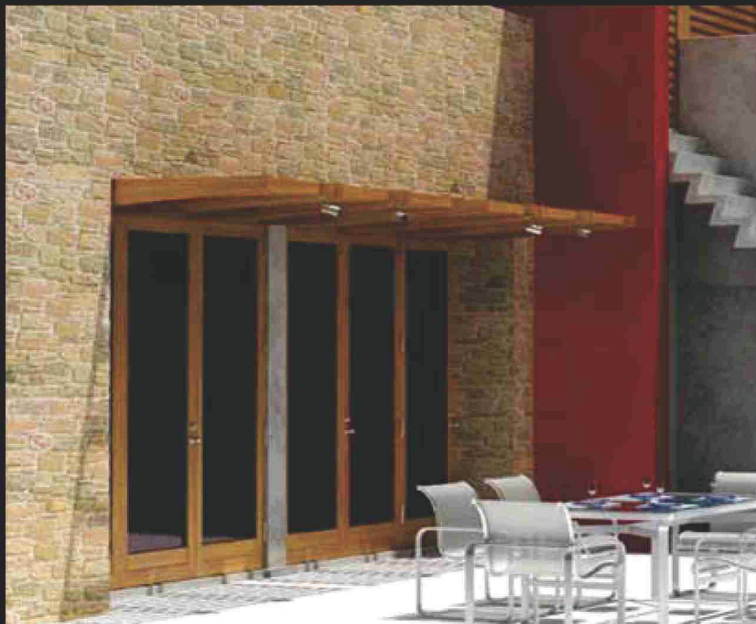
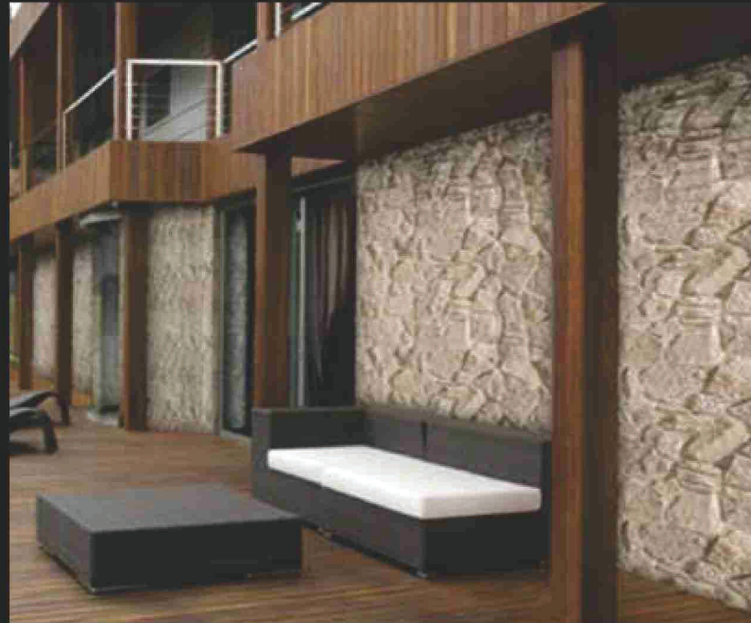


Travertine Stone Std



Dimensions: 950 x 880 mm  
Weight: 4-7kgs/panel

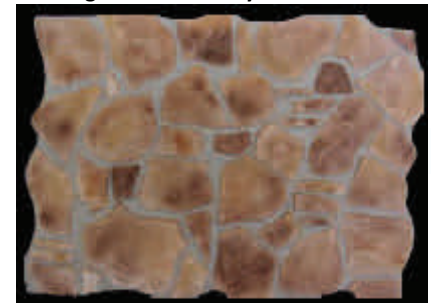




**Nottingham Stone Std**



**Nottingham Stone Grey Grout**



**Dimensions: 1120 x 780 mm  
Weight: 4-7kgs/panel**

**Everglades Std**



**Dimensions: 1110 x 810 mm  
Weight: 4-7kgs/panel**

# 3D DESIGN

## Conturmuri range



**Fiali**

Dimensions: 600 x 595mm



**Boma**

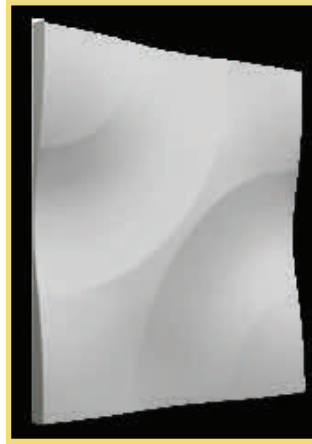
Dimensions: 496 x 495mm





**Duna**

Dimensions: 595 x 595mm



**Clessi**

Dimensions: 500 x 500mm



**Caseum**

Dimensions: 595 x 595mm



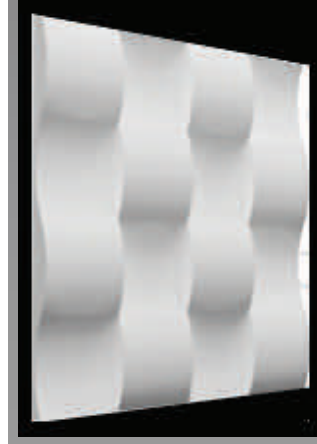
**Pyramis**

Dimensions: 600 x 600mm



**Tessere**

Dimensions: 596 x 595mm



**Quadcirc**

Dimensions: 596 x 595mm



## ***New Wall Cladding Range***

**ENVIROCLAD** is proud to offer our NEW CLADDING panels in the following varieties/styles. Client choice of colour can be considered on supply of official paint colour codes. For a true sense of how this product may look in your home, contact a member of the sales team to discuss where you can view the product. Note: Panels NOT to scale - Sizes below



**Big Wave**

Size: 2420 x 600mm



**Shutter**

Size: 1200 x 800mm



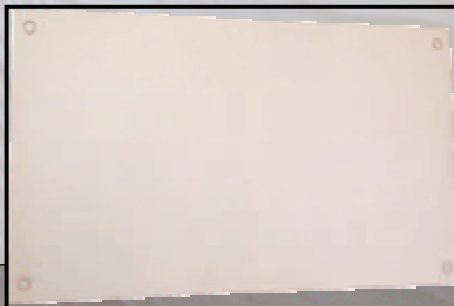
**Jhaten**

Size: 595 x 300mm



**Deep Wave**

Size: 960 x 750mm



**Flat**

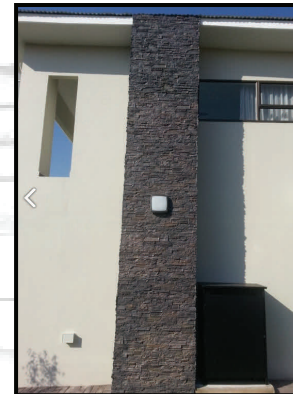
Size: 1170 x 600mm

At **Enviroclad** we are continuously looking for new and fresh cladding designs, to ensure that we can always deliver a unique solution to your cladding requirements!

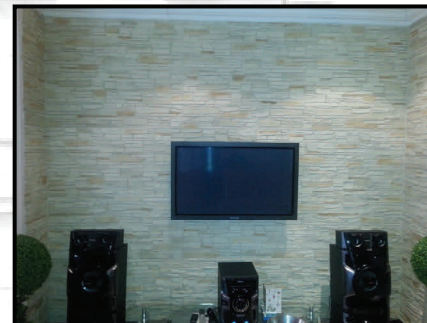
# Recent Projects

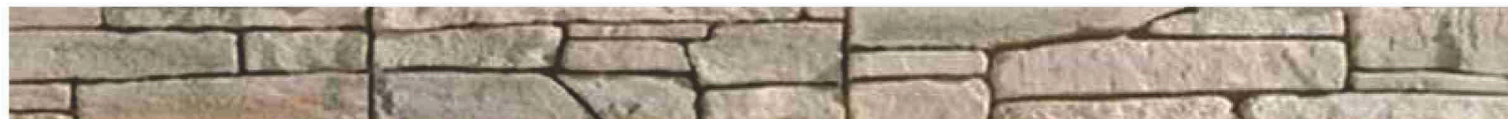


Private Residences  
South Africa



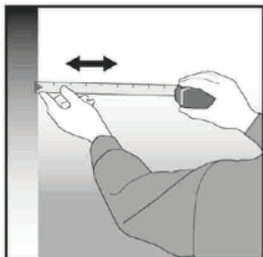
SABC Studios  
Johannesburg South Africa





## Easy and quick installation

ENVIROCLAD permits an easy, clean and quick installation. It can be fixed to any surface without using adhesive or derivatives, which saves both time and money. Follow these simple step-by-step instructions for the above mentioned products.



**1.** Measure the surface to be covered and calculate the number of panels needed.



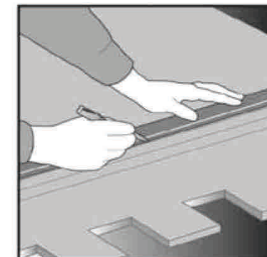
**2.** When starting the work, cut one side of the panel to get a completely straight edge.



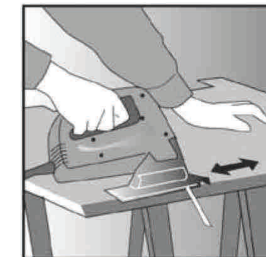
**3.** Fit the panel to the wall and drill through the panel directly into the wall using a 6mm drill bit. Put the screw into the wall-plug and introduce both into the hole in the panel. Push and screw them in until the panel is securely fixed. (e.g. "Fischer" 6mm wall plug and 4.5 x 40 screws are recommended). Use as many screws per panel as needed.



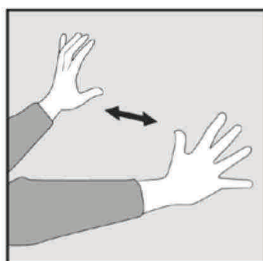
**A.** When you reach an external corner, mark on the inside of the panel line a line where the panel meets the wall. (This will be the inside line of the cut)



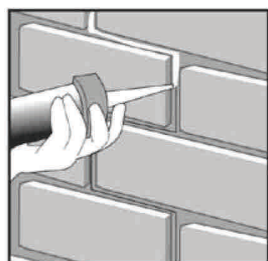
**A.** From this line, mark all parallel line away from the wall at a distance equal to double the thickness of the panel - between 2 and 4 cm depending on the model. (This will be the outside line of the cut)



**C.** Set a jigsaw to 45° and use it to cut between the lines.



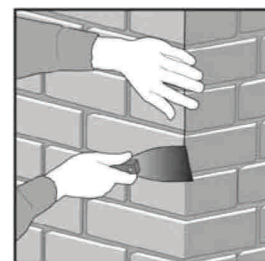
**4.** Repeat this procedure with the other panels which are designed to fit perfectly.



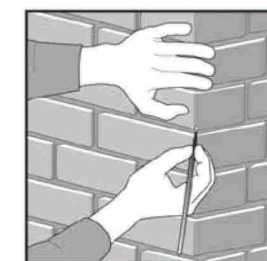
**5.** Once the whole wall has been covered with the panels fill the joints and screw wholes with glue- paste.



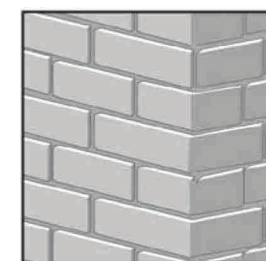
**6.** When filled remove any irregularities in the paste with a fine brush. Once the paste is completely dry (approx. 24 hours), paint the joints and screw holes with ENVIROCLAD special paint, to give a perfect finish.



**D.** Offer the panel up to the corner and fix it to the wall. Fill the joint and the holes.



**E.** When the joint is filled, remove any irregularities in the paste with a fine brush.



**F.** Once the filler paste is dry, paint the joint with ENVIROCLAD special paint.

## Corner Fixing

For external and pillars the panels need to be cut at an angle by following the steps below.